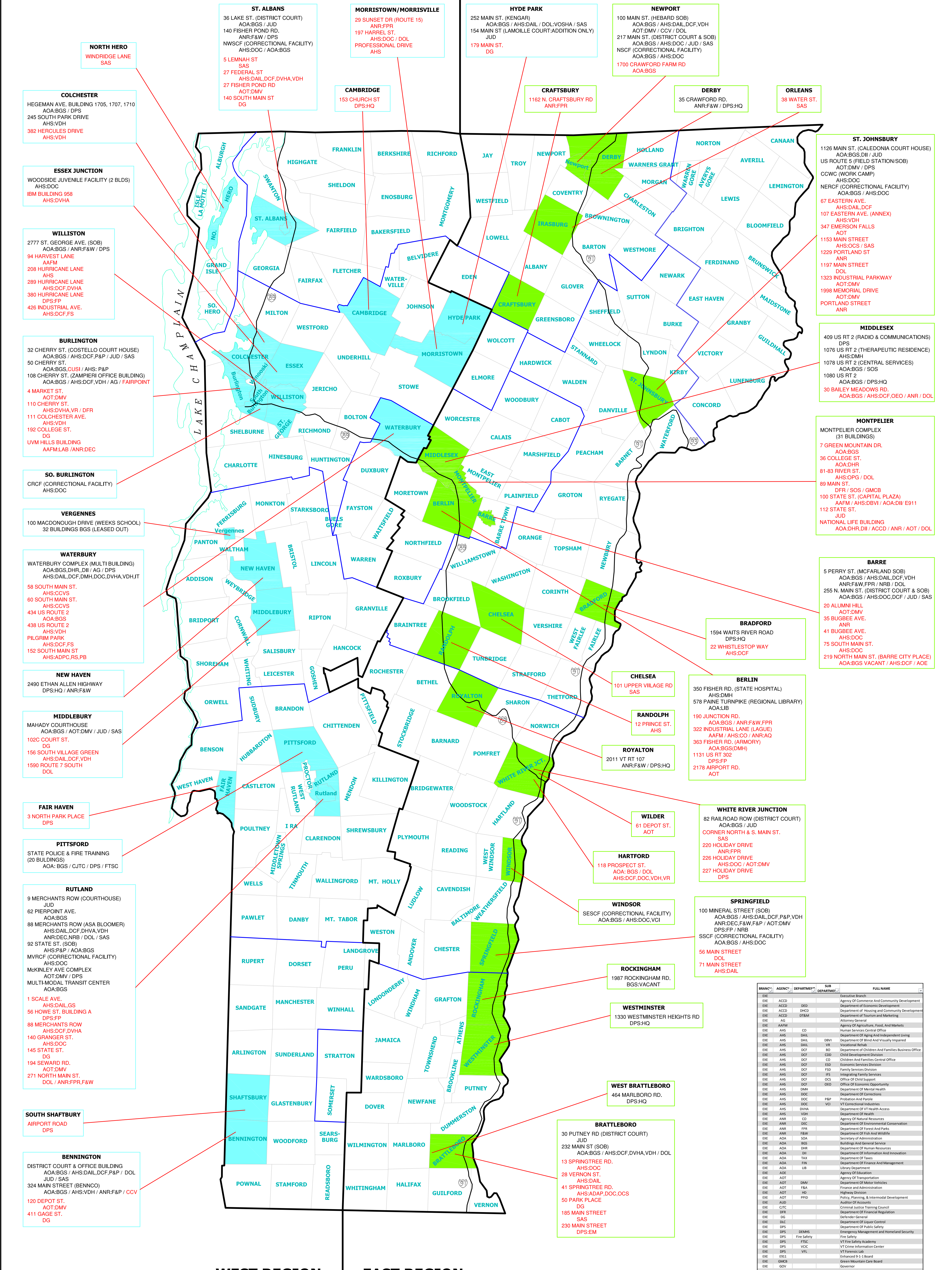


WEST REGION

EAST REGION



# LOCATION MAP of BGS STATE OWNED & STATE LEASED SPACE

BUILDINGS & GENERAL SERVICES  
PROPERTY MANAGEMENT  
REVISED SEPTEMBER 2016

BRANCH	AGENCY	DEPARTMENT	SUB DEPARTMENT	FULL NAME
EXE	ACCD	DEB		Executive Branch
EXE	ACCD	DEB		Agency of Commerce And Community Development
EXE	ACCD	DEB		Department of Economic Development
EXE	ACCD	DEB		Department of Housing and Community Development
EXE	ACCD	DEB		Department of Tourism and Marketing
EXE	ACD			Attorney General
EXE	AAFM			Agency of Agriculture, Food, and Markets
EXE	AHS	CO		Human Services Central Office
EXE	AHS	DIAL		Department of Aging and Independent Living
EXE	AHS	DBVI		Department of Blind and Visually Impaired
EXE	AHS	DHVS		Vocational Rehabilitation
EXE	AHS	DCF	BO	Department of Children and Families Business Office
EXE	AHS	DCF	CCD	Child Development Division
EXE	AHS	DCF	CD	Children and Families Central Office
EXE	AHS	DCF	ESD	Economic Services Division
EXE	AHS	DCF	FSD	Family Services Division
EXE	AHS	DCF	IFS	Integrated Family Services
EXE	AHS	DCF	OCS	Office of Child Support
EXE	AHS	DCF	ODED	Office of Economic Opportunity
EXE	AHS	DDM		Department of Mental Health
EXE	AHS	DDC		Department of Corrections
EXE	AHS	DDC	F&B	Probation and Parole
EXE	AHS	DDC	VCI	Department of VT Health Access
EXE	AHS	DVHA		Department of Health
EXE	ANR	CO		Agency of Natural Resources
EXE	ANR	DEC		Department of Environmental Conservation
EXE	ANR	FRS		Department of Forest and Parks
EXE	ANR	F&W		Department of Fish and Wildlife
EXE	ADA	SDA		Secretary of Administration
EXE	ADA	BSG		Business and General Services
EXE	ADA	DHR		Department of Human Resources
EXE	ADA	ISI		Department of Information and Innovation
EXE	ADA	TAX		Department of Taxes
EXE	ADA	FIN		Department of Finance and Management
EXE	ADL	LIB		Library Department
EXE	AOE			Agency of Office
EXE	AOT	DMK		Agency of Transportation
EXE	AOT	DAM		Department of Motor Vehicles
EXE	AOT	F&A		Finance and Administration
EXE	AOT	HRD		Highway Division
EXE	AOT	PRD		Public Relations and Intergovernmental Development
EXE	AUD			Auditor of Accounts
EXE	CJE			Criminal Justice Training Council
EXE	DFR			Department of Financial Regulation
EXE	DG			Defender General
EXE	SLC			Department of Liquor Control
EXE	DPS			Department of Public Safety
EXE	DPS	DDMHS		Emergency Management and Homeland Security
EXE	DPS	FRS		Fire Safety
EXE	DPS	VFC		VT Fire Safety Academy
EXE	DPS	VCC		VT Crime Information Center
EXE	DPS	VFL		VT Forensic Lab
EXE	ES11			Enhanced 9-1-1 Board
EXE	EM&B			Emergency Management Board
EXE	GOV			Governor
EXE	HRC			Human Rights Commission
EXE	LRB			State Labor Relations Board
EXE	LTG			Lieutenant Governor
EXE	ORA			Office of Resources Board
EXE	PSB			Public Service Board
EXE	PSD			Public Service Department
EXE	SAS			States Attorney & Sheriffs
EXE	SOS			Secretary of State
EXE	TRE			State Treasurer
EXE	VAC			VT Arts Council
EXE	VCCVS			VT Center for Crime Victims Services
EXE	VCV			VT Commission on Veterans
EXE	VDOL			Department of Labor
EXE	VNS			VT Historical Society
EXE	VLC			VT Lottery Commission
EXE	VVB			VOSH Review Board
EXE	VVB			Transportation Board
EXE	VVH			VT Veterans Home
JUD				Judicial Branch
JUD	ADMIN			Department Administrator
JUD	SC			Superior Court
LEG				Legislative Branch
LEG	JFO			Joint Fiscal Office
LEG	LEG			Legislative Council
LEG	SAA			Sergeant at Arms

WEST SPRINGFIELD, MASS.  
EASTERN STATES EXPO  
AGR